



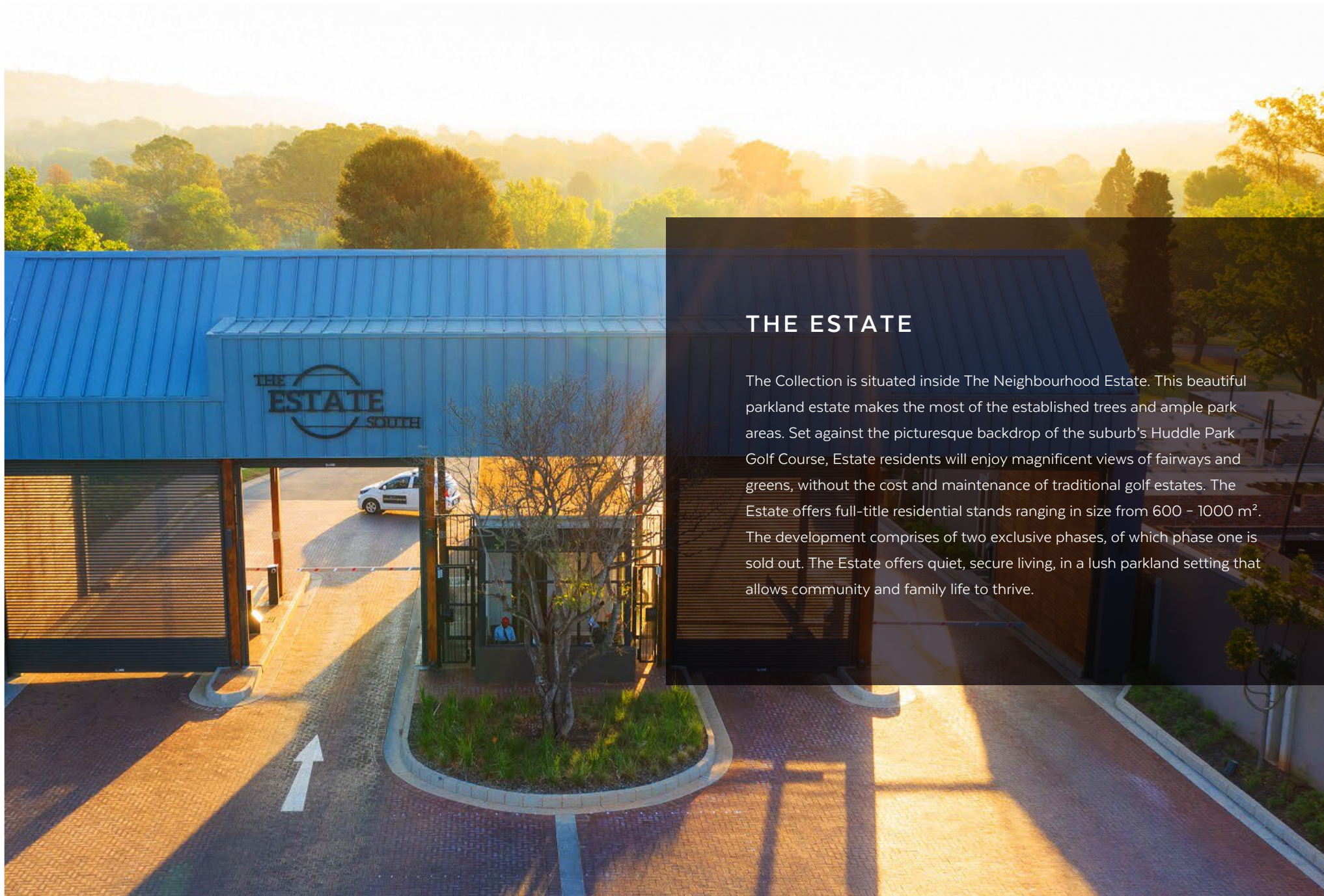
THE NEIGHBOURHOOD  
**COLLECTION**

THE BEST KEPT SECRET  
IN THE NEIGHBOURHOOD



# THE LOCATION






## THE ESTATE

The Collection is situated inside The Neighbourhood Estate. This beautiful parkland estate makes the most of the established trees and ample park areas. Set against the picturesque backdrop of the suburb's Huddle Park Golf Course, Estate residents will enjoy magnificent views of fairways and greens, without the cost and maintenance of traditional golf estates. The Estate offers full-title residential stands ranging in size from 600 – 1000 m<sup>2</sup>. The development comprises of two exclusive phases, of which phase one is sold out. The Estate offers quiet, secure living, in a lush parkland setting that allows community and family life to thrive.

## LIMITED UNITS AVAILABLE

The Neighbourhood Collection presents 13 prime position free-standing sectional-title properties that consist of 3 spacious bedrooms, all en-suite. The open-plan living space opens out onto a private patio, overlooking an enclosed garden.



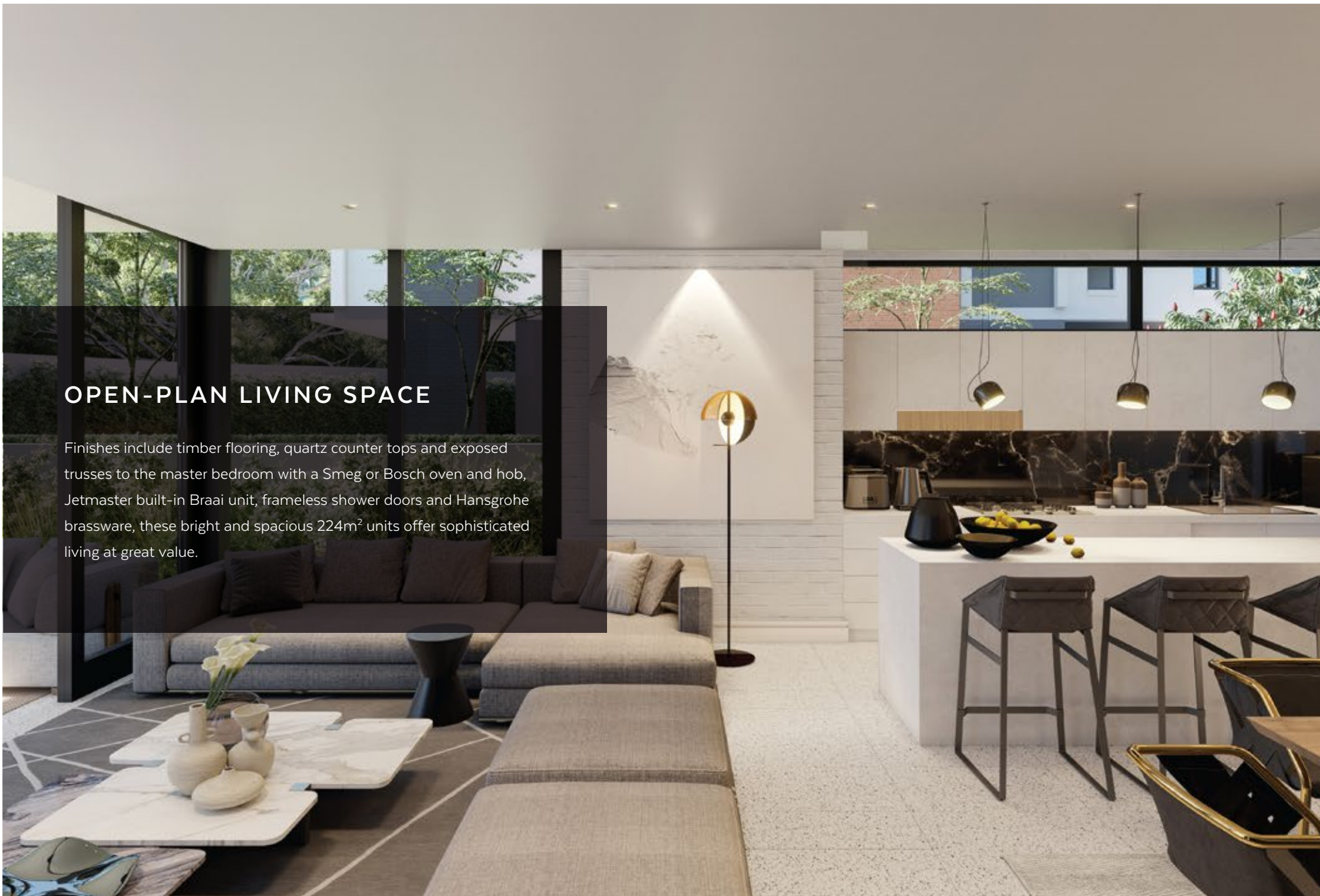


## EXTERIOR DESIGN

Inspired by a community ethos and using design elements of the modern barn style homes.

## OPEN-PLAN LIVING SPACE

Finishes include timber flooring, quartz counter tops and exposed trusses to the master bedroom with a Smeg or Bosch oven and hob, Jetmaster built-in Braai unit, frameless shower doors and Hansgrohe brassware, these bright and spacious 224m<sup>2</sup> units offer sophisticated living at great value.



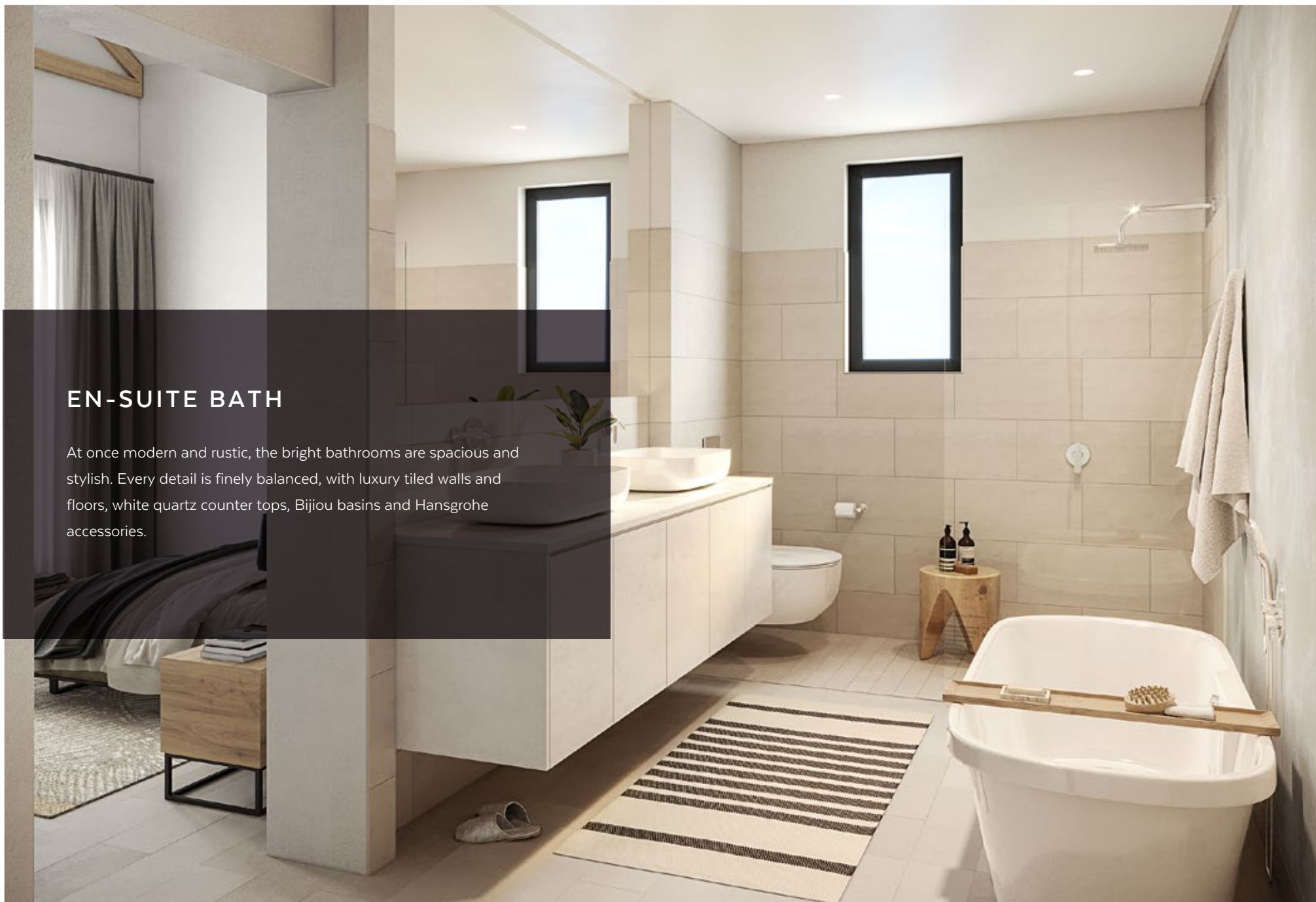
## COLOUR YOUR LIVING SPACE

Select from two distinctive colour-schemes, each creating an elegant and integrated ambience: A light option, which creates a sense of space and flow, or a dark option, framing the space to provide a sense of comfort and warmth.



## EN-SUITE BATH

At once modern and rustic, the bright bathrooms are spacious and stylish. Every detail is finely balanced, with luxury tiled walls and floors, white quartz counter tops, Bijou basins and Hansgrohe accessories.





## LIMITED UNITS AVAILABLE

The Neighbourhood Collection presents 13 prime position free-standing sectional-title properties that consist of Type A - 3 spacious bedrooms with 2 bathrooms, or a Type B - 3 spacious bedrooms with 2 bathrooms, all en-suite. The open-plan living space opens out onto a private patio, overlooking an enclosed garden.

### 3 BEDROOM 2 BATHROOM

R4,900,000

186m<sup>2</sup>

### 3 BEDROOM 3 BATHROOM

R5,900,000

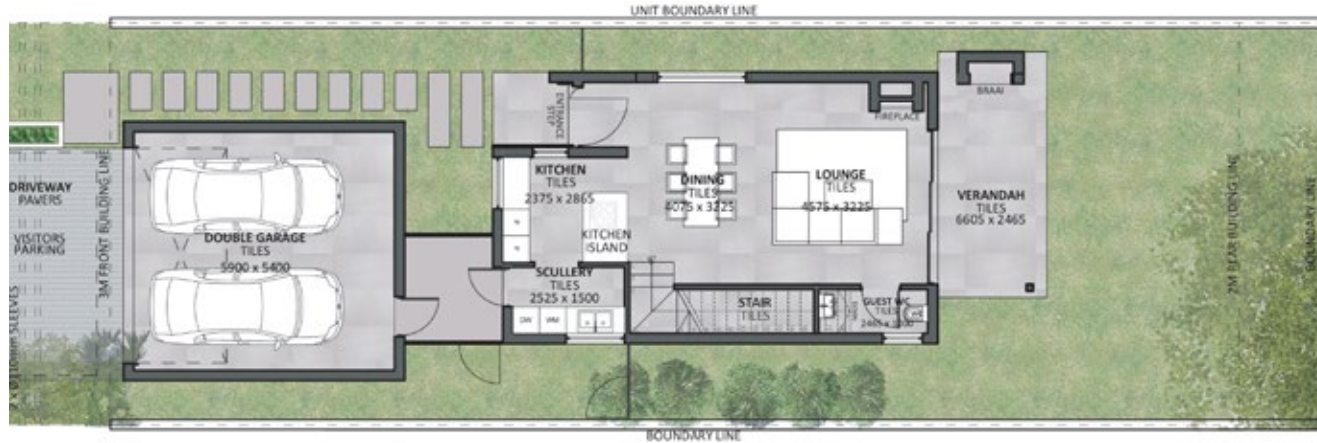
244m<sup>2</sup>

# THE NEIGHBOURHOOD COLLECTION

UNIT TYPE A - 3 BED | 2 BATH



FIRST FLOOR PLAN



GROUND FLOOR PLAN

DWELLING (GROUND FLOOR) 59m<sup>2</sup>

COVERED VERANDAH 14m<sup>2</sup>

DOUBLE GARAGE 37m<sup>2</sup>

DWELLING (FIRST FLOOR) 72m<sup>2</sup>

BALCONY (S) 4m<sup>2</sup>

**TOTAL 186m<sup>2</sup>**

ENTRANCE STEP 2.8m<sup>2</sup>

COVERED WALKWAY 16m<sup>2</sup>

# THE NEIGHBOURHOOD COLLECTION

## UNIT TYPE B - 3 BED | 3 BATH



FIRST FLOOR PLAN




GROUND FLOOR PLAN

DWELLING (GROUND FLOOR)	68m <sup>2</sup>
COVERED VERANDAH	19m <sup>2</sup>
COVERED WALKWAY	15m <sup>2</sup>
DOUBLE GARAGE	37m <sup>2</sup>
DWELLING (FIRST FLOOR)	104m <sup>2</sup>
SLAB OVERHANG	1.47m <sup>2</sup>

**TOTAL 244.47m<sup>2</sup>**

SERVICE YARD	5m <sup>2</sup>
ENTRANCE STEP	3m <sup>2</sup>

A photograph of an outdoor cafe seating area. In the foreground, there is a wooden deck with a railing made of vertical wooden posts and horizontal metal bars. Several yellow plastic chairs are arranged around tables. In the background, there are white patio umbrellas and a building with a sign that says "GR L HOUSE". A large tree is on the right side of the image. The sky is overcast.

## COME HOME TO COMMUNITY

The Neighbourhood has created ample opportunities for neighbours to form a special community.



## OUTDOOR SPACES

Lush, planted parks connected by shaded pathways, provides residents with secure recreational areas to enjoy whether you're riding your bike, or simply walking the dogs.



**Book a viewing of The Collection today!**

**Ashleigh**  
ashleigh.levin@investec.co.za | 082 401 6199

OR

**Melissa**  
melissa.vanniekerk@investec.co.za | 072 330 8121

**THE**  
**NEIGHBOURHOOD**

ESTATE • RESIDENCE • SQUARE

**No.9 Huddle Crescent, Club Street, Linksfield, 2094**

**[www.theneighbourhood.joburg](http://www.theneighbourhood.joburg)**